

Parking: Hoesch Additive Floor®

The perfect solution
for multi-storey car parks



**Successful over
many years!**

A company
of ThyssenKrupp
Steel

ThyssenKrupp Hoesch Bausysteme



ThyssenKrupp

The perfect solution for multi-storey car parks



For many years, ThyssenKrupp Hoesch Bausysteme have been engaged in developing solutions for parking systems. In 1991, a floor system particularly suitable for multi-storey car parks was developed: Hoesch Additive Floor®. This system, composed of profiled steel sheets of high load-bearing capacity and a lightweight reinforced-concrete ribbed slab offers many benefits: easy logistics, large spans, a wide range of colours to meet visual requirements and proved durability. In the course of time, ThyssenKrupp Hoesch Bausysteme have acquired a wealth of experience. More than 300 projects have been realised in Europe, from simple parking decks to multi-storey car parks of different sizes and designs. Altogether, more than 3,000,000 m² of Hoesch Additive Floor® have been installed. If you are looking for a solution, whether for a parking deck or a multi-storey car park, please contact us and take advantage of our expertise. Our engineers will give you any advice you may require, from planning to execution.



Key data when planning parking areas

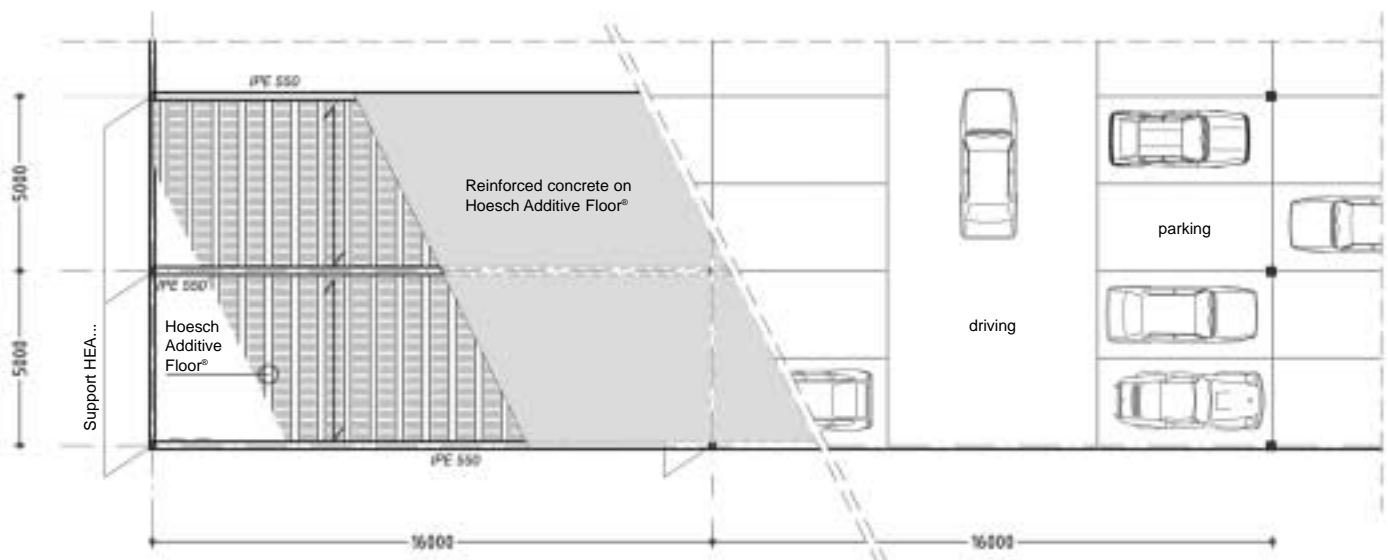
Reference values for the design of multi-storey car parks in Germany:		Standard system:	
Parking lot width:	2.5 m	Main girder span:	approx. 16 m
Parking lot length:	5.0 m	Typical floor span:	5 m
Aisle width:	6.0 m	Parking lot dimensions:	2.5 m x 5 m
Ramp slope:	12 %		
Max. car weight:	25.0 kN		
Min. clearance height:	2.10 m		

Requirements with regard to fire protection: generally there are no requirements in the case of open multi-storey car parks.

Comfortably and clearly arranged



Distribution of parking space



Types of multi-storey car parks



Planning a multi-storey car park can be very complex. The planner has to take account of all constructional alternatives in order to achieve the optimum acceptance, quality, economic efficiency and durability of the building. From an early stage this requires various marginal technical and economic conditions to be taken into consideration. The specialists from ThyssenKrupp Hoesch Bausysteme will be pleased to provide their expertise and experience without any commitment on your part. The selection of the type of car park primarily depends on the nature of the use and the defined priorities. When considering the nature of the use, a distinction is drawn between distributed volumes of traffic with vehicles constantly entering and leaving the car park (e.g. shopping centres) and peak volume of traffic, where the complete car park is filled and emptied in a short time (e.g. car parks for staff). Furthermore, the available space and the desired design are important when determining the type of car park.

The following car park systems are possible and have already been put into practice:

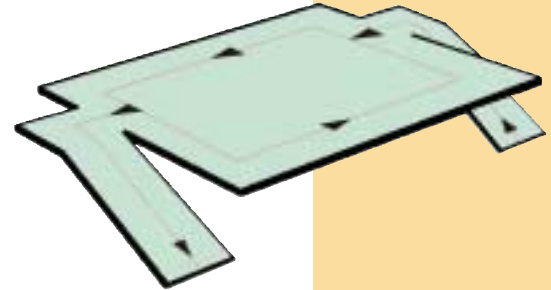
- **Single-storey car park:** one single parking area above street level
- **Flat car park:** horizontal parking areas on a number of storeys with separate access ramps outside or inside the building
- **Split-level car park:** horizontal parking levels arranged on mezzanine floors with short ramps between the parking levels
- **Ramped car park:** the storeys are achieved by an inclined arrangement of the parking levels.



■ Single-storey car park

A single-storey car park using the Hoesch Additive Floor® system is one of the simplest and most economic solutions. In most cases, this type of car

park is used in order to extend existing parking areas. Foundations and supports can be dimensioned so as to cater for the future addition of several parking levels in the future.



■ Flat car park

This type is especially suitable for large car parks, which have to cope with distributed volu-

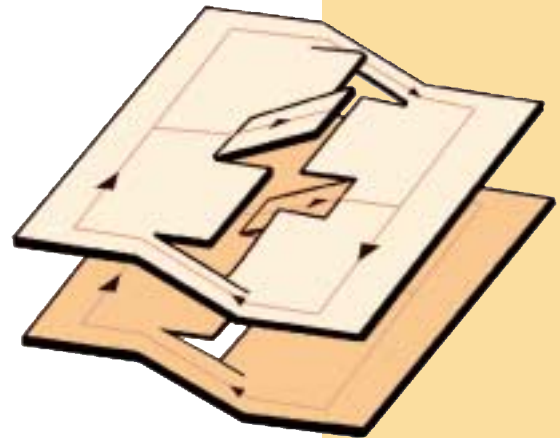
mes of traffic as well as peak traffic volumes. Large car parks are often provided with separate ramps for access and exit.



■ Split-level car park

This design is the most commonly used type of car park because of its flexibility. The name is derived from the design principle: the parking

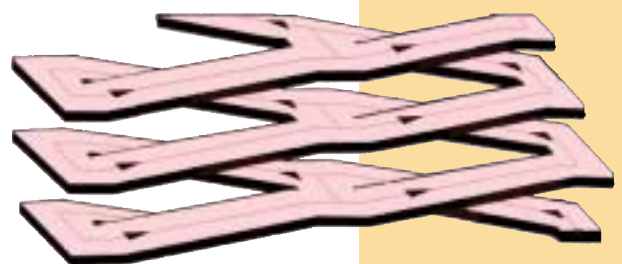
levels are arranged on mezzanine floors, connected by short ramps. The use of this design maximizes the available area. The centrally arranged ramps ensure a smooth traffic flow.



■ Ramped car park

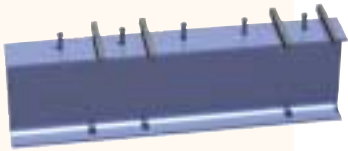
In ramped car parks, cars are parked on levels which are inclined so as to achieve the storeys required (maximum slope 5 %). This system is mainly used for very long buildings. The long distances are not conducive to rapid traffic flow

in the case of traffic peaks. However, this solution is considered to be one of the most userfriendly systems due to the low slope. As access and exit ramps are not required, the gross space required is optimised which makes this solution the most efficient one.



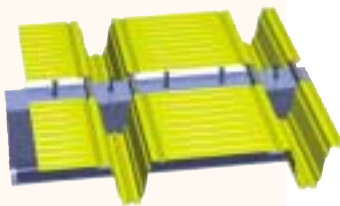
Good reasons for choosing Hoesch Additive Floor®

Product properties:



Extremely rapid erection

Auxiliary props to support the floors and the steel structure in the concrete placing phase are not required. The various crafts, e.g. erection of the steel structure, profile laying, installation of reinforcement and concrete placing can be carried out independently of each other and in parallel. No additional painting of the floor lower side is required as the profiled sheets are provided with a high-quality coating when supplied.

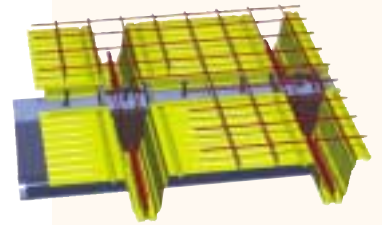


High economic efficiency

The generously dimensioned spans result in a low steel consumption. Thanks to the special profile geometry no supports are required and small floor cross sections are obtained. This results in lower costs down to the foundations.

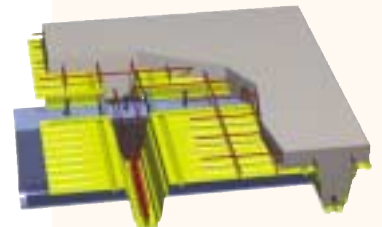
Attractive lower surface

The perfect colour finish selected from a large colour range, which is applied to the exposed lower side, makes an additional painting unnecessary and saves lighting costs. An agreeable atmosphere is created by the interplay of the colours of supports and floor.



Durability

The Hoesch Additive Floor® system has stood the test for over 15 years. It has been used in more than 300 car parks with a total surface area of about 3,000,000 m². The profiled sheets are galvanised and coated with a high-quality two-layer stove enamel lacquer on a polyester base. Thus, they comply with the most stringent corrosion protection class K III as per DIN 55928-8. The complete floor structure behaves very well in the long term. An experts report of resistance of the floor upper side to deicing salt as required by DIN 1045-1 is available. Our experts will be pleased to convince you of the economic efficiency of this system.



References



Car parks at airports

- 50,000 m² Airport Hannover
- 12,000 m² Airport Saarbrücken
- 30,000 m² Airport Münster-Osnabrück
- 340,000 m² Airport Köln-Bonn
- 32,000 m² Airport Dresden
- 61,000 m² Airport Bremen

Car parks for car manufacturers

- 7,000 m² BMW
- 68,000 m² Daimler Chrysler
- 33,400 m² Audi
- 89,500 m² VW
- 20,000 m² Opel
- 25,600 m² Ford

Car parks for 9 IKEA stores

- 107,000 m² Total surface

International projects

- 10,500 m² Tiroltherme Lengenfeld (AT)
- 4,700 m² Car park Dreispitz, Basel (CH)
- 32,000 m² Car park exhibition area, Zürich (CH)
- 60,000 m² Car park Duda, Sosnowiec (PL)
- 10,000 m² Car park Wroclaw (PL)
- 45,000 m² Car park Bouillon, Luxemburg (L)
- 13,500 m² City centre Kirchberg, Luxemburg (L)
- 8,000 m² Car park de Boogert, Rijswijk (NL)
- 10,000 m² Car park WFC, Amsterdam (NL)
- 10,500 m² Car park Rijnstate Hospital, Arnhem (NL)
- 11,000 m² Car park Makro, Vianen (NL)
- 5,300 m² Car park Medway Maritime Hospital, Kent (GB)
- 11,000 m² Administration office, Istanbul (TR)
- 1,000 m² Victoria prison, Hong Kong (HK)

ThyssenKrupp Hoesch Bausysteme GmbH
Hammerstraße 11
D-57223 Kreuztal, Germany
Phone ++ 49/27 32 / 599 - 12 21
Fax ++ 49/27 32 / 599 - 12 19
e-mail: export.tks-bau@thyssenkrupp.com
Internet: www.tks-bau.com



All details contained in this brochure are only guaranteed insofar as they have been expressly and specifically confirmed in writing. Subject to technical modifications.
GB • Info 3.1.7 • 12.2006 • bc