

# Hoesch isowand integral®



Ref. No. 657a/01  
to LPS 1181



A company  
of ThyssenKrupp  
Steel

## ThyssenKrupp Bausysteme



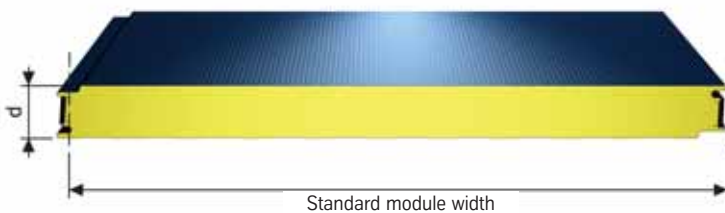
ThyssenKrupp

## Hoesch isowand integral®

is a perfected sandwich-system for modern industrial architecture with PUR- or PIR foam. It creates a union of economical construction and up-to-date design. The integral system gives you the choice of colours, dimensions, and directions of laying as well as flat, micro- or v-profiled surface finish, PUR- or PIR- foam with LPCB approval.

That is how ThyssenKrupp Bausysteme, in cooperation with the architect, creates new perspectives in form and function. In 1962 ThyssenKrupp Bausysteme was one of the first producers for sandwich elements. Our experience is your advantage.

For further details see our technical references.



Designation of building element	Cover width	Element thickness	Material thickness		Max. length supplied	Weight	Thermal resistance R*	Heat transfer coefficient U*	Thermal resistance R <sub>D</sub> **	Heat transfer coefficient U**	Heat transfer coefficient U***
			outer sheet t <sub>N</sub>	inner sheet t <sub>N</sub>							
Hoesch isowand integral®	1000 (standard)	60	0.55	0.55	20	12.1	2.56	0.37	2.55	0.42	0.43
		80				12.9	3.43	0.28	3.40	0.30	0.31
		100				13.7	4.30	0.22	4.30	0.24	0.25
		120				14.4	5.17	0.19	5.15	0.20	0.20
	600 (on request)	60	0.55	0.55	20	12.7	2.56	0.37	2.55	0.45	0.46
		80				13.5	3.43	0.28	3.40	0.31	0.33
		100				14.3	4.30	0.22	4.30	0.25	0.26
		120				15.1	5.17	0.19	5.15	0.21	0.22

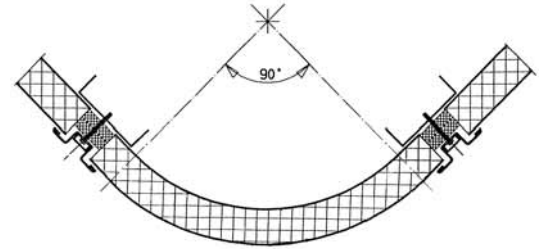
\* calculation acc. to EN ISO 6946

\*\* calculation acc. to EN 13 165 taking account of the joints acc. to EN 14 509

\*\*\* like \*\* but taking also account of the brackets (every second meter). Other cover widths, material thicknesses or types of sheet material on request.

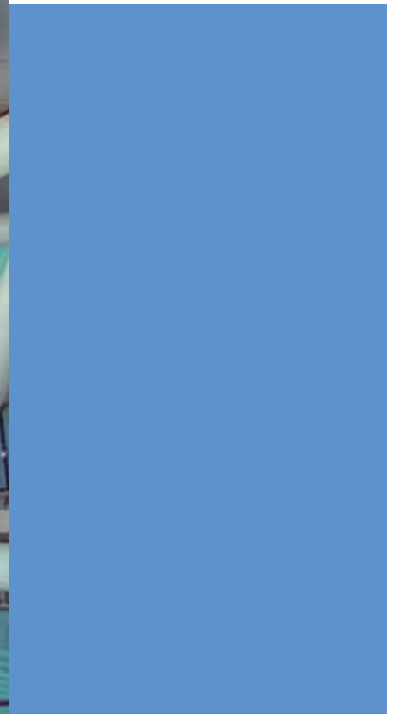
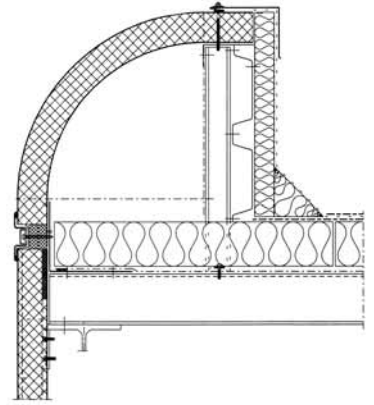
## Styling

The curved and square corner panels of Hoesch isowand integral® create detailing solutions making every building an architectural appealing unit.



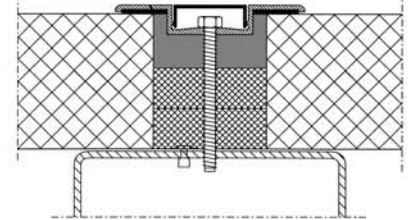
## Fittings

Hoesch isowand integral® provides a special joint construction. The panels are fitted with concealed clamps.



## Design

Wide choice of connections and detail solutions gives the designer a whole range of creative solutions.

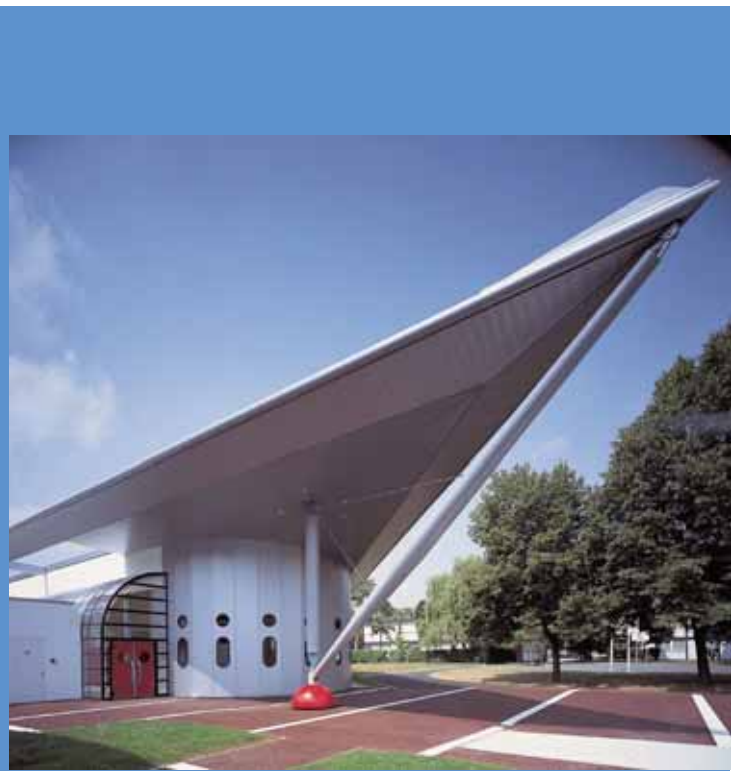
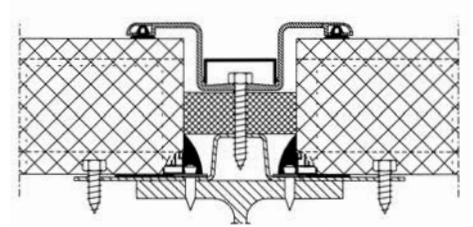


## Accents and Imagination



## Shape and variety

Masking of joints and connections with aluminium profiles in a free choice of colours creates homogeneous surfaces.



**ThyssenKrupp Bausysteme GmbH**  
Hammerstrasse 11  
D-57223 Kreuztal, Germany  
Phone: +49 / 27 32 / 599 1 221  
Fax: +49 / 27 32 / 599 1 219  
E-Mail: [export.tks-bau@thyssenkrupp.com](mailto:export.tks-bau@thyssenkrupp.com)  
Internet: [www.tks-bau.com](http://www.tks-bau.com)



Certification to  
EN ISO 9001



RAL Quality mark awarded by  
"Gütegemeinschaft für Bauelemente aus Stahlblech e. V."

The information contained in this leaflet defines assured properties only when they are individually confirmed in writing.  
Subject to modification.  
GB • Info 2.5.1 a • 7.2007 • bc